

Indian Potato Varieties

(1949-2020)

Authors

Jagesh Kumar Tiwari
Satish K. Luthra
Dalamu
Vinay Bhardwaj
Rajesh Kumar Singh
Tanuja Buckseth
Raj Kumar
VK Gupta
Vinod Kumar
Shambhu Kumar
Salej Sood
Manoj Kumar



**ICAR-CENTRAL POTATO RESEARCH
INSTITUTE, SHIMLA (HP)**



List of potato varieties developed by ICAR-CPRI, Shimla since inception during 1949-2020

Sr. No.	Variety
1.	Kufri Alankar
2.	Kufri Anand
3.	Kufri Arun
4.	Kufri Ashoka
5.	Kufri Badshah
6.	Kufri Bahar
7.	Kufri Chamatkar
8.	Kufri Chandramukhi
9.	Kufri Chipsona-1
10.	Kufri Chipsona-2
11.	Kufri Chipsona-3
12.	Kufri Chipsona-4
13.	Kufri Dewa
14.	Kufri FryoM
15.	Kufri Frysona
16.	Kufri Ganga
17.	Kufri Garima
18.	Kufri Gaurav
19.	Kufri Girdhari
20.	Kufri Giriraj
21.	Kufri Himalini
22.	Kufri Himsona
23.	Kufri Jawahar
24.	Kufri Jeevan
25.	Kufri Jyoti
26.	Kufri Kanchan
27.	Kufri Karan
28.	Kufri Kesar
29.	Kufri Khasigaro
30.	Kufri Khyati
31.	Kufri Kisan
32.	Kufri Kuber
33.	Kufri Kumar
34.	Kufri Kundan
35.	Kufri Lalima
36.	Kufri Lalit
37.	Kufri Lauvkar
38.	Kufri Lima
39.	Kufri Manik
40.	Kufri Megha

41. Kufri Mohan
42. Kufri Muthu
43. Kufri Naveen
44. Kufri Neela
45. Kufri Neelamani
46. Kufri Neelima
47. Kufri Neelkanth
48. Kufri Pukhraj
49. Kufri Pushkar
50. Kufri Red
51. Kufri Sadabahar
52. Kufri Safed
53. Kufri Sahyadri
54. Kufri Sangam
55. Kufri Shailja
56. Kufri Sheetman
57. Kufri Sherpa
58. Kufri Sindhuri
59. Kufri Sukhyati
60. Kufri Surya
61. Kufri Sutlej
62. Kufri Swarna
63. Kufri Thar-1
64. Kufri Thar-2
65. Kufri Thar-3

1. Kufri Alankar

Year of release: 1968

Yield: 20-25 t/ha

Adaptability: North Indian plains

Purpose: Table

Maturity: Medium

Special trait: Moderately resistant to late blight and early bulker

Kufri Alankar



2. Kufri Anand

Year of release: 1999

Yield: 35-40 t/ha

Adaptability: North Indian plains

Purpose: Table

Maturity: Medium

Special trait: Moderately resistant to late blight, tolerant to hopper burn and frost and suitable for spring season

Kufri Anand



3. Kufri Arun

Year of release: 2005

Yield: 30-35 t/ha

Adaptability: North Indian plains

Purpose: Table

Maturity: Medium

Special trait: Moderately resistant to late blight

Kufri Arun



4. Kufri Ashoka

Year of release: 1996

Yield: 25-30 t/ha

Adaptability: North Indian plains

Purpose: Table

Maturity: Early

Special trait: Susceptible to late blight

Kufri Ashoka



5. Kufri Badshah

Year of release: 1979

Yield: 30-35 t/ha

Adaptability: North Indian plains and plateau

Purpose: Table

Maturity: Medium

Special trait: Resistant to late blight, early blight and PVX

Kufri Badshah



6. Kufri Bahar

Year of release: 1980

Yield: 30-35 t/ha

Adaptability: North Indian plains

Purpose: Table

Maturity: Medium

Special trait: Susceptible to late blight, moderately resistant to gemini virus and early bulker

Kufri Bahar



7. Kufri Chamatkar

Year of release: 1968

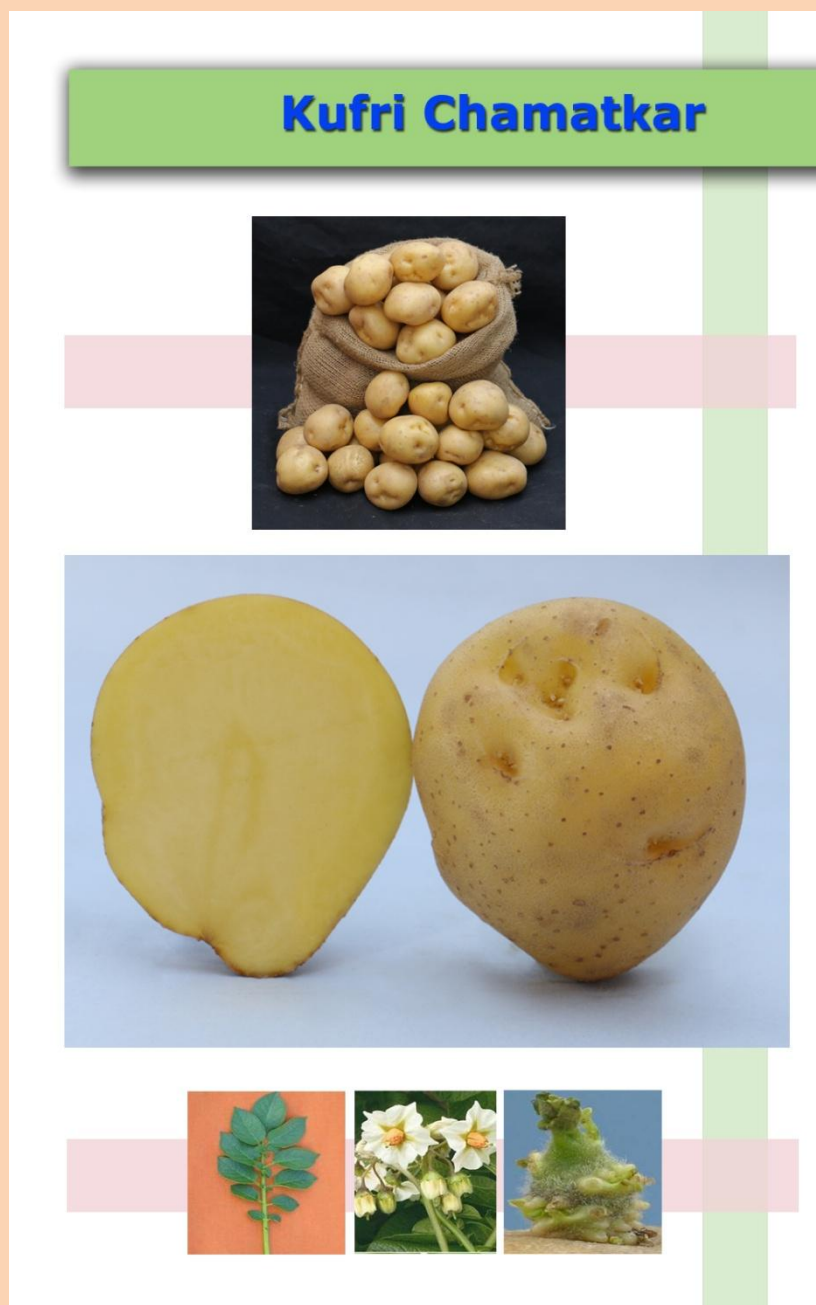
Yield: 20-25 t/ha

Adaptability: North Indian plains

Purpose: Table

Maturity: Late

Special trait: Susceptible to late blight and mainly medium size tubers



8. Kufri Chandramukhi

Year of release: 1968

Yield: 20-25 t/ha

Adaptability: North Indian plains and plateau

Purpose: Table

Maturity: Early

Special trait: Susceptible to late blight and attractive tubers with excellent flavour

Kufri Chandramukhi



9. Kufri Chipsona-1

Year of release: 1998

Yield: 30-35 t/ha

Adaptability: North Indian plains

Purpose: Processing

Maturity: Medium

Special trait: Resistant to late blight and suitable for chips and French fries

Kufri Chipsona-1



10. Kufri Chipsona-2

Year of release: 1998

Yield: 30-35 t/ha

Adaptability: North Indian plains

Purpose: Processing

Maturity: Medium

Special trait: Resistant to late blight and suitable for chips & French fries

Kufri Chipsona-2



11. Kufri Chipsona-3

Year of release: 2006

Yield: 30-35 t/ha

Adaptability: North Indian plains

Purpose: Processing

Maturity: Medium

Special trait: Resistant to late blight and suitable for chips & French fries



12. Kufri Chipsona-4

Year of release: 2019

Yield: 30-35 t/ha

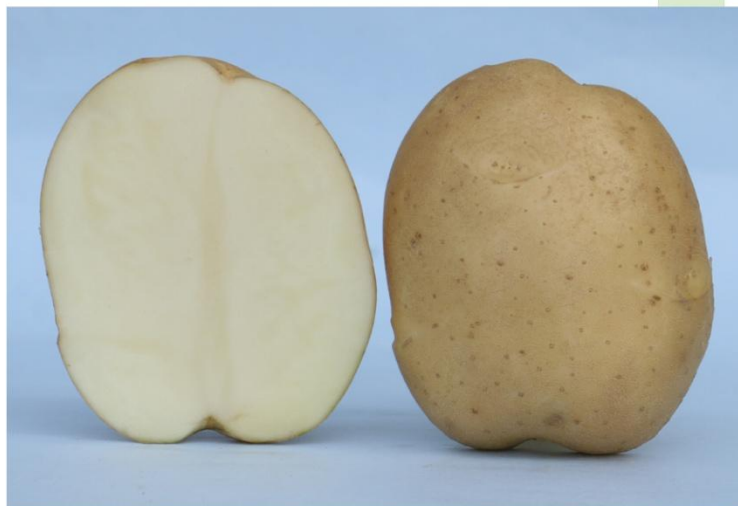
Adaptability: Karnataka, West-Bengal, Madhya Pradesh and Gujarat

Purpose: Processing

Maturity: Medium

Special trait: Suitable for chips

Kufri Chipsona-4



13. Kufri Dewa

Year of release: 1973

Yield: 20-25 t/ha

Adaptability: North Indian plains

Purpose: Table

Maturity: Late

Special trait: Frost tolerant and good keeper

Kufri Dewa



14. Kufri FryoM

Year of release: 2019

Yield: 30-35 t/ha

Adaptability: North west and central plains

Purpose: Processing

Maturity: Medium

Special trait: Resistant to late blight and PVY, and suitable for French fries



15. Kufri Frysona

Year of release: 2009

Yield: 30-35 t/ha

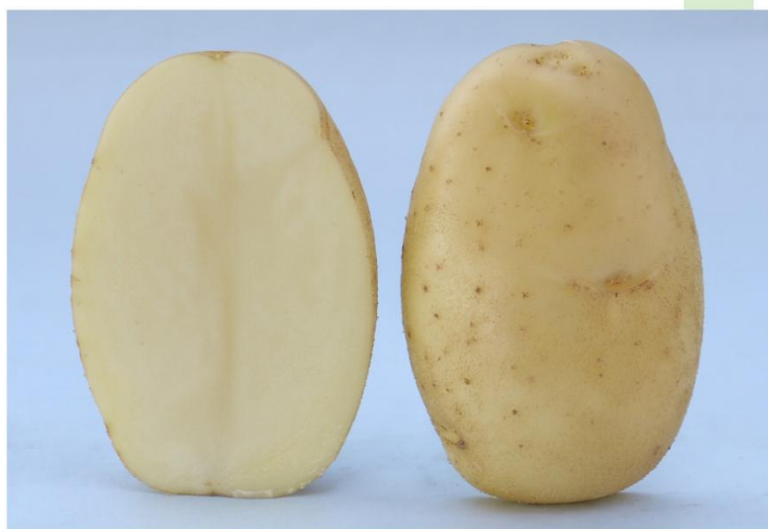
Adaptability: North Indian plains

Purpose: Processing

Maturity: Medium

Special trait: Resistant to late blight and suitable for French fries

Kufri Frysona



16. Kufri Ganga

Year of release: 2018

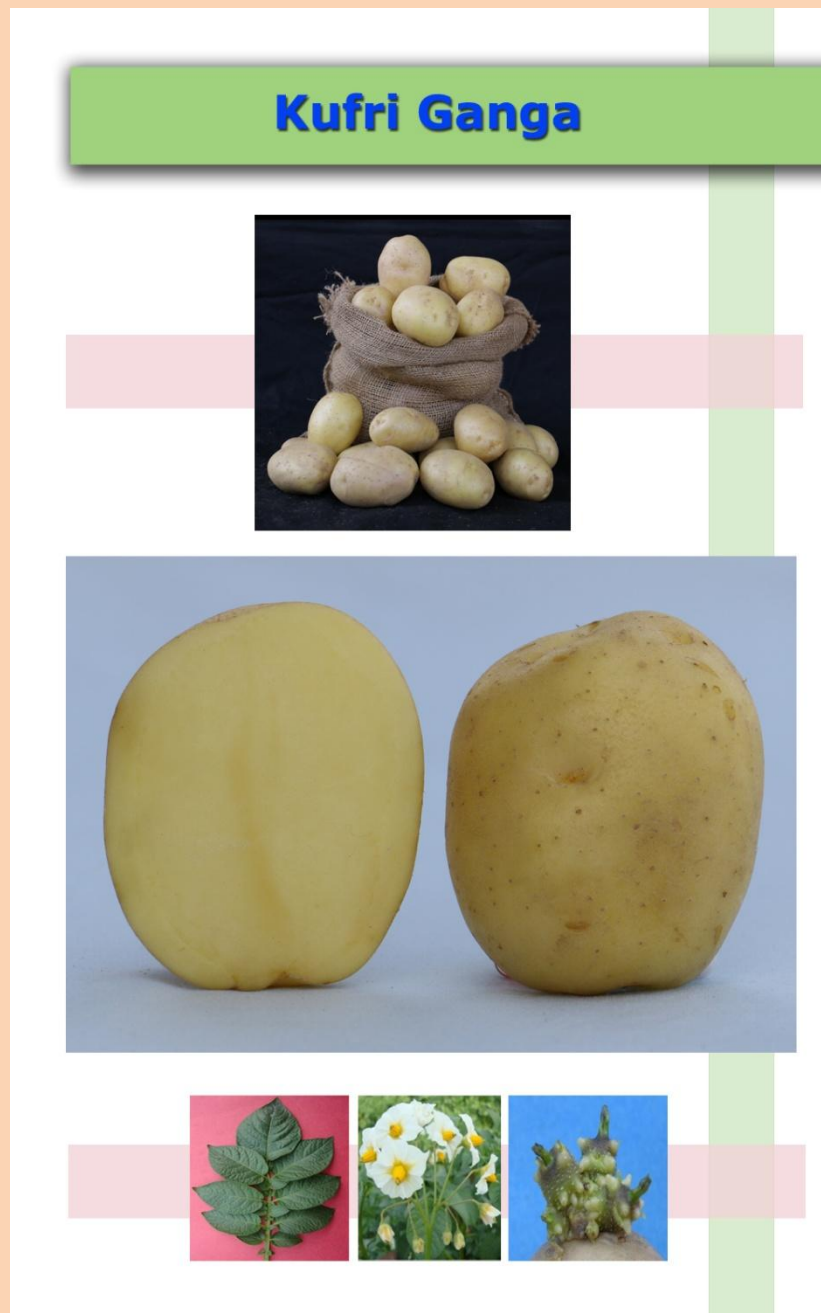
Yield: 35-40 t/ha

Adaptability: North Indian plains

Purpose: Table

Maturity: Medium

Special trait: Moderately resistant to late blight and tolerant to moderate drought conditions



17. Kufri Grima

Year of release: 2012

Yield: 30-35 t/ha

Adaptability: Indo-Gangetic plains and plateau

Purpose: Table

Maturity: Medium

Special trait: Resistant to late blight



18. Kufri Gaurav

Year of release: 2012

Yield: 30-35 t/ha

Adaptability: North Indian plains

Purpose: Table

Maturity: Medium

Special trait: Susceptible to late blight and nutrients (NPK) use efficient at sub-optimal dose

Kufri Gaurav



19. Kufri Girdhari

Year of release: 2008

Yield: 30-35 t/ha

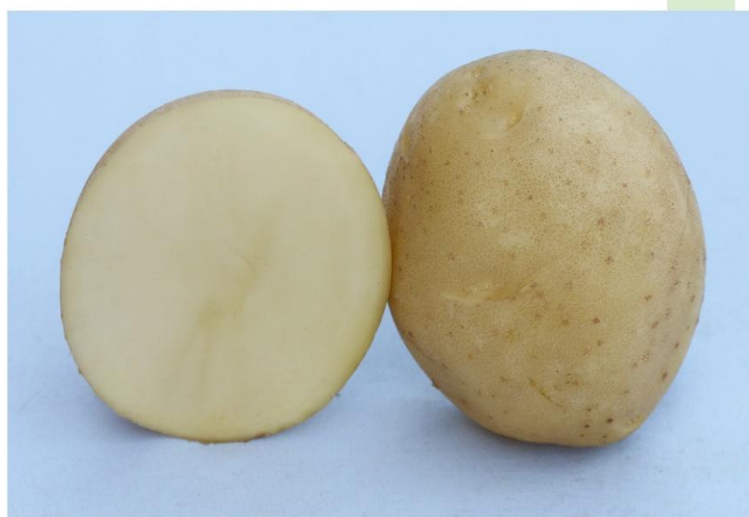
Adaptability: Indian hills

Purpose: Table

Maturity: Medium

Special trait: Highly resistant to late blight and long tuber dormancy

Kufri Girdhari



20. Kufri Giriraj

Year of release: 1998

Yield: 20-25 t/ha

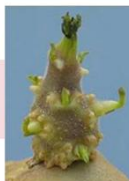
Adaptability: North Indian hills

Purpose: Table

Maturity: Medium

Special trait: Moderately resistant to late blight

Kufri Giriraj



21. Kufri Himalini

Year of release: 2006

Yield: 30-35 t/ha

Adaptability: North Indian hills

Purpose: Table

Maturity: Medium

Special trait: Moderately resistant to late blight, and good yield in both hills & plains

Kufri Himalini



22. Kufri Himsona

Year of release: 2008

Yield: 15-20 t/ha

Adaptability: Indian hills

Purpose: Processing

Maturity: Late

Special trait: Moderately resistant to late blight and suitable for chips

Kufri Himsona



23. Kufri Jawahar

Year of release: 1996

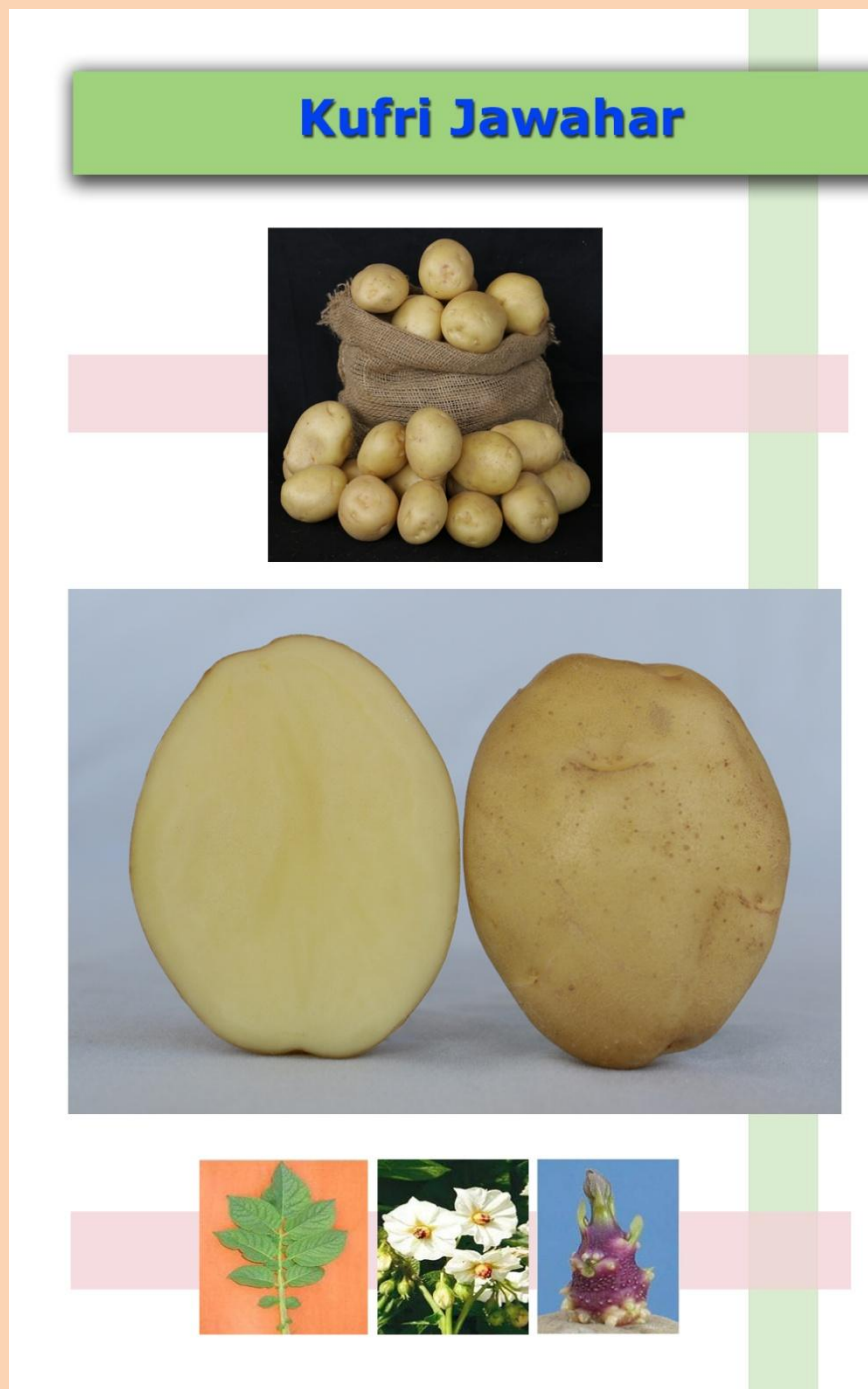
Yield: 25-30 t/ha

Adaptability: North Indian plains and plateau

Purpose: Table

Maturity: Early

Special trait: Moderately resistant to late blight, slow degeneration and suitable for inter-cropping



24. Kufri Jeevan

Year of release: 1968

Yield: 15-20 t/ha

Adaptability: North Indian hills

Purpose: Table

Maturity: Late

Special trait: Moderately resistant to late blight and early blight

Kufri Jeevan



25. Kufri Jyoti

Year of release: 1968

Yield: 25-30 t/ha

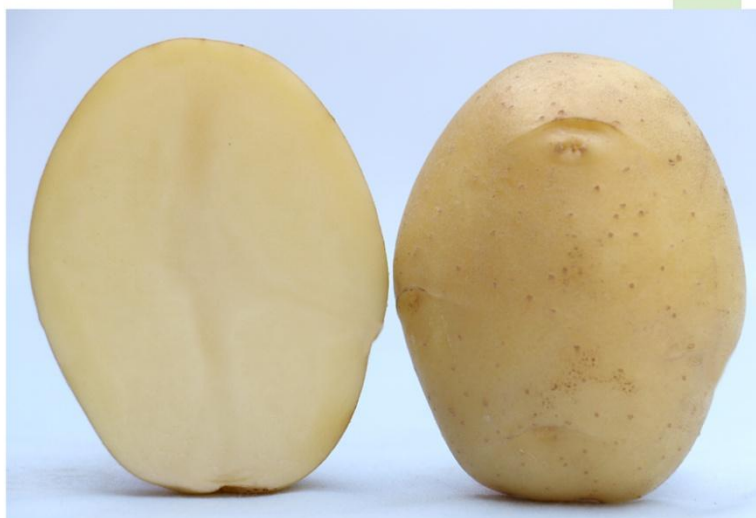
Adaptability: Hills, Plains and plateau

Purpose: Table

Maturity: Medium

Special trait: Moderately resistant to late blight, wide adaptability, early bulker, slow degeneration and day neutral

Kufri Jyoti



26. Kufri Kanchan

Year of release: 1999

Yield: 25-30 t/ha

Adaptability: North-Bengal hills and Sikkim

Purpose: Table

Maturity: Medium

Special trait: Moderately resistant to late blight and slow degeneration



27. Kufri Karan

Year of release: 2019

Yield: 22-25 t/ha

Adaptability: Hills and plateau

Purpose: Table

Maturity: Medium

Special trait: High resistant to late blight, six potato viruses and potato cyst nematodes



28. Kufri Khasigaro

Year of release: 1968

Yield: 20-25 t/ha

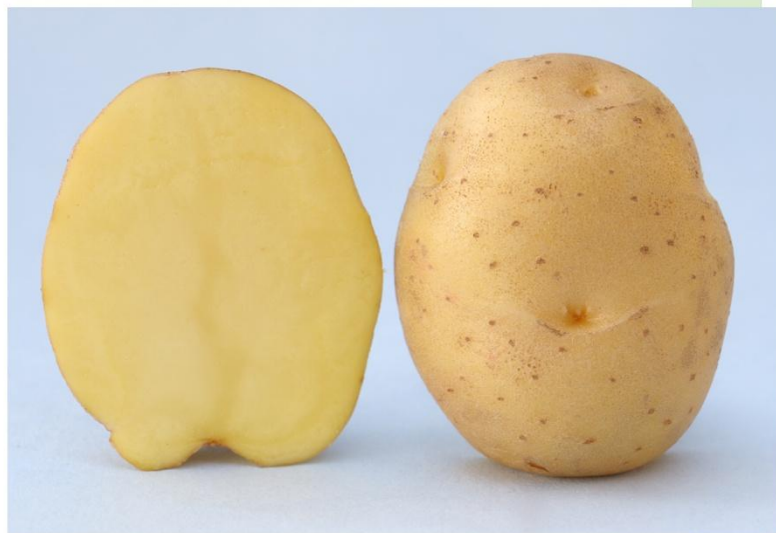
Adaptability: North-eastern hills

Purpose: Table

Maturity: Late

Special trait: Moderately resistant to late blight and early blight

Kufri Khasigaro



29. Kufri Khyati

Year of release: 2008

Yield: 25-30 t/ha

Adaptability: North Indian plains

Purpose: Table

Maturity: Early

Special trait: Resistant to late blight and early blight, early bulker and suitable for high cropping intensity

Kufri Khyati



30. Kufri Kuber

Year of release: 1958

Yield: 15-20 t/ha

Adaptability: North Indian plains and plateau

Purpose: Table

Maturity: Early

Special trait: Susceptible to late blight

Kufri Kuber



31. Kufri Kumar

Year of release: 1958

Yield: 15-20 t/ha

Adaptability: North Indian hills

Purpose: Table

Maturity: Late

Special trait: Moderately resistant to late blight

Kufri Kumar



32. Kufri Kundan

Year of release: 1958

Yield: 15-20 t/ha

Adaptability: North Indian hills

Purpose: Table

Maturity: Late

Special trait: Moderately resistant to late blight

Kufri Kundan



33. Kufri Lalima

Year of release: 1982

Yield: 20-25 t/ha

Adaptability: North Indian plains

Purpose: Table

Maturity: Medium

Special trait: Moderately resistant to late blight

Kufri Lalima



34. Kufri Lalit

Year of release: 2013

Yield: 30-35 t/ha

Adaptability: Eastern plains

Purpose: Table

Maturity: Medium

Special trait: Resistant to late blight

Kufri Lalit



35. Kufri Lauvkar

Year of release: 1972

Yield: 20-25 t/ha

Adaptability: Plateau

Purpose: Table

Maturity: Early

Special trait: Susceptible to late blight and heat tolerant

Kufri Lauvkar



36. Kufri Lima

Year of release: 2018

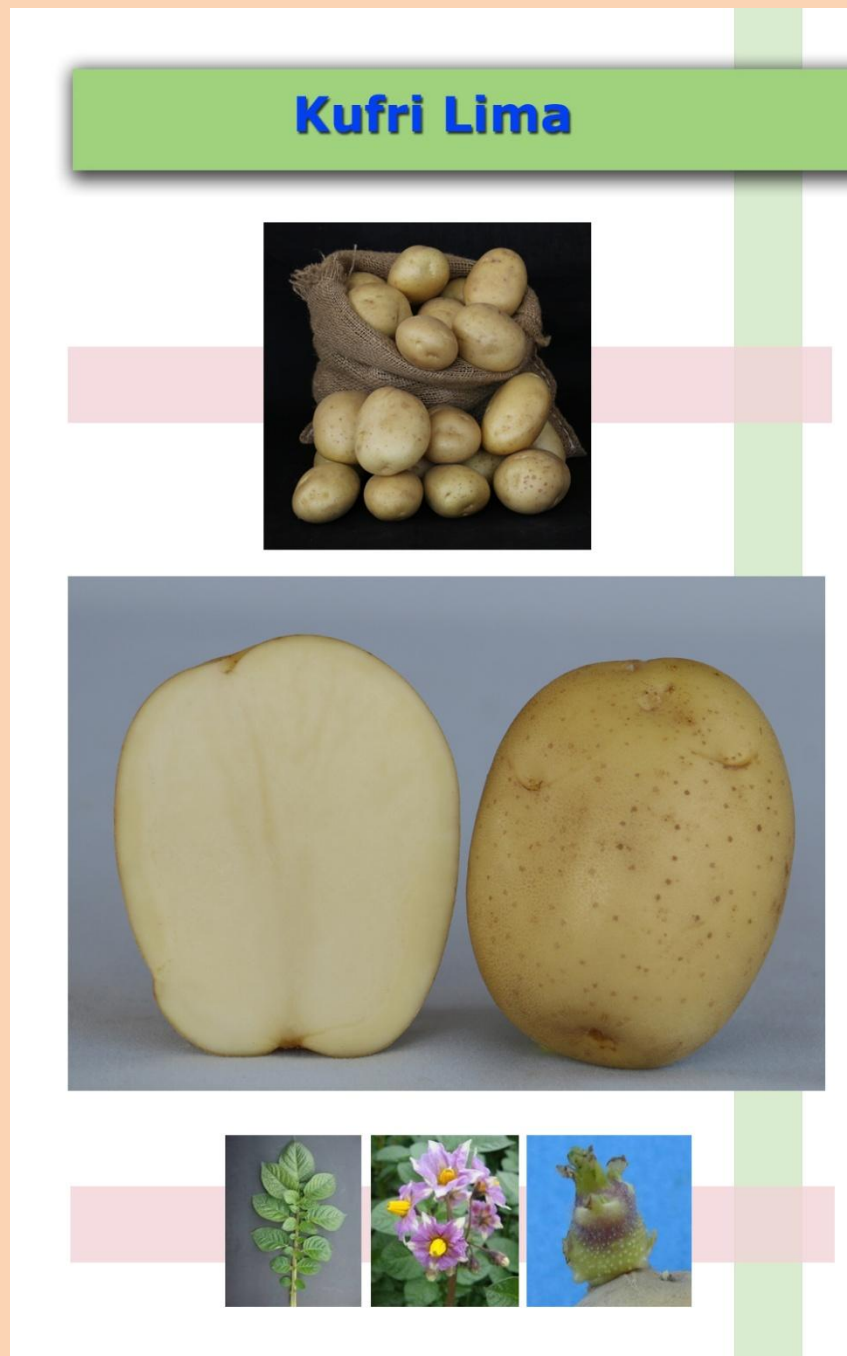
Yield: 30-35 t/ha (15-20 t/ha under early heat stress)

Adaptability: North Indian plains

Purpose: Table

Maturity: Medium to late

Special trait: Susceptible to late blight, extreme resistant to PVX and PVY. Tolerant to early heat, hopper burn and mite, and suitable for early and main planting



37. Kufri Manik

Year of release: 2019

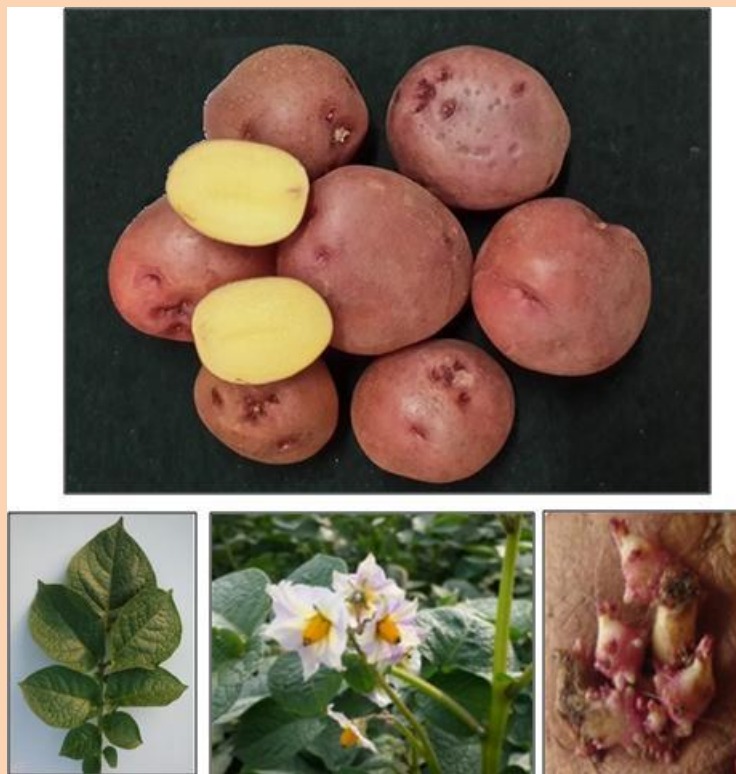
Yield: 22-25 t/ha

Adaptability: Eastern plains

Purpose: Table

Maturity: Medium

Special trait: Resistant to late blight and rich in micronutrients (Fe and Zn), anthocyanin and carotenoids, and suitable for eastern plains (bio-fortified variety)



38. Kufri Megha

Year of release: 1989

Yield: 25-30 t/ha

Adaptability: North-eastern hills

Purpose: Table

Maturity: Medium

Special trait: Moderately resistant to late blight

Kufri Megha



39. Kufri Mohan

Year of release: 2016

Yield: 35-40 t/ha

Adaptability: Northern and eastern plains

Purpose: Table

Maturity: Medium

Special trait: Moderately resistant to late blight

Kufri Mohan



40. Kufri Muthu

Year of release: 1971

Yield: 25-30 t/ha

Adaptability: South Indian hills

Purpose: Table

Maturity: Medium

Special trait: Moderately resistant to late blight

Kufri Muthu



41. Kufri Naveen

Year of release: 1968

Yield: 20-25 t/ha

Adaptability: North-eastern hills

Purpose: Table

Maturity: Late

Special trait: Moderately resistant to late blight

Kufri Naveen



42. Kufri Neela

Year of release: 1963

Yield: 20-25 t/ha

Adaptability: South Indian hills

Purpose: Table

Maturity: Late

Special trait: Moderately resistant to late blight

Kufri Neela



43. Kufri Neelima

Year of release: 2010

Yield: 25-30 t/ha

Adaptability: Nilgiri hills

Purpose: Table

Maturity: Medium

Special trait: Resistant to late blight and PCN

Kufri Neelima



44. Kufri Neelkanth

Year of release: 2018

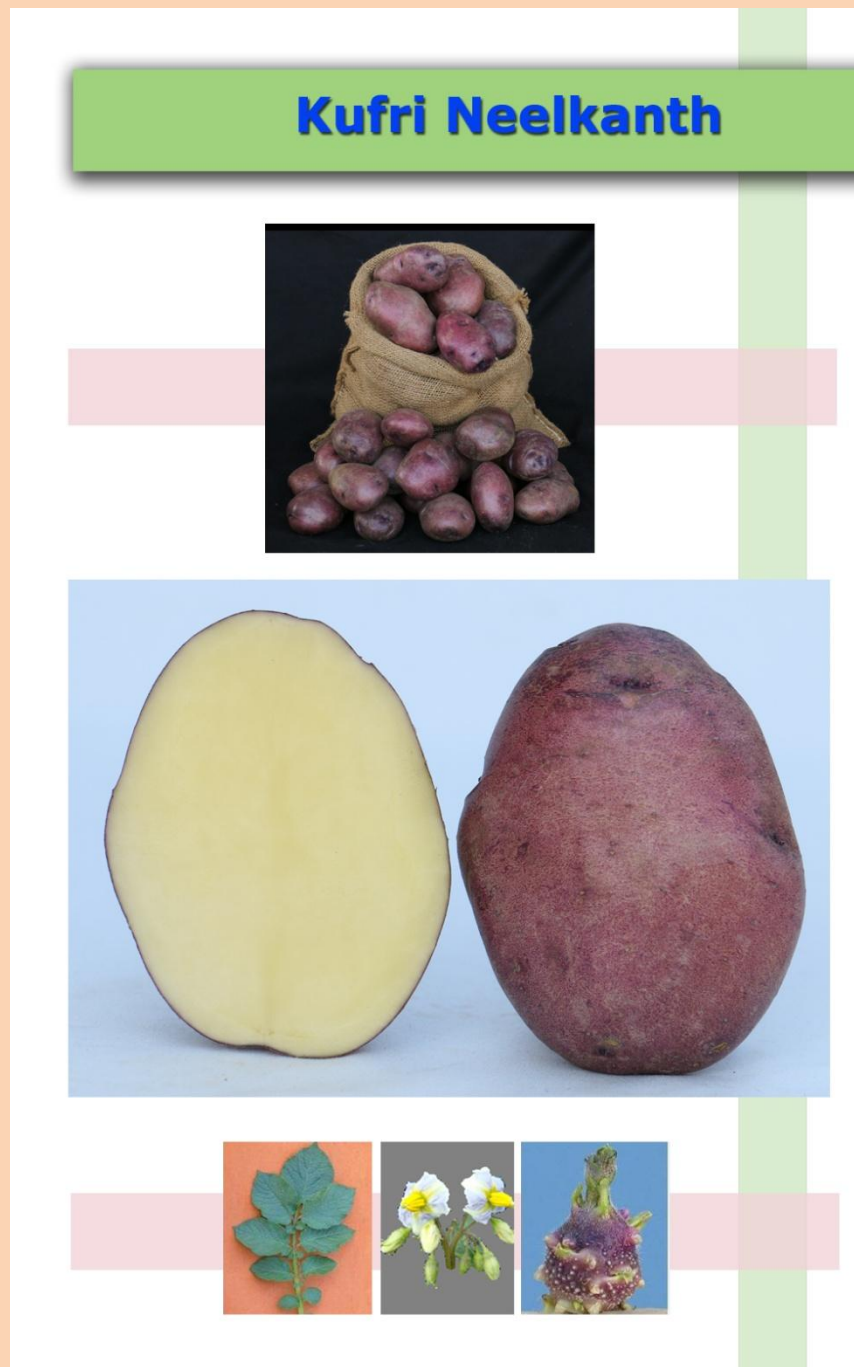
Yield: 35-40 t/ha

Adaptability: North Indian plains

Purpose: Table

Maturity: Medium

Special trait: Resistant to late blight, rich in antioxidants (anthocyanin and carotenoids), excellent flavour and speciality potato



45. Kufri Pukhraj

Year of release: 1998

Yield: 35-40 t/ha

Adaptability: North Indian plains

Purpose: Table

Maturity: Early to medium

Special trait: Moderately resistant to late blight, early bulker and requires low input

Kufri Pukhraj



46. Kufri Pushkar

Year of release: 2005

Yield: 30-35 t/ha

Adaptability: North Indian plains

Purpose: Table

Maturity: Medium

Special trait: Resistant to late blight

Kufri Pushkar



47. Kufri Red

Year of release: 1958

Yield: 20-25 t/ha

Adaptability: Nort-eastern plains

Purpose: Table

Maturity: Medium

Special trait: Susceptible to late blight

Kufri Red



48. Kufri Sadabahar

Year of release: 2008

Yield: 30-35 t/ha

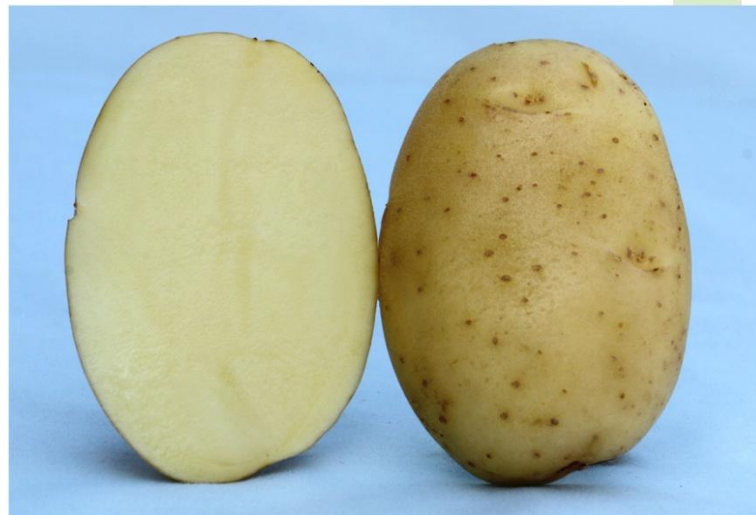
Adaptability: Uttar Pradesh and adjoining area

Purpose: Table

Maturity: Medium

Special trait: Moderately resistant to late blight and early bulker

Kufri Sadabahar



49. Kufri Safed

Year of release: 1958

Yield: 20-25 t/ha

Adaptability: North Indian plains

Purpose: Table

Maturity: Late

Special trait: Susceptible to late blight

Kufri Safed



50. Kufri Sahyadri

Year of release: 2019

Yield: 30-35 t/ha

Adaptability: Nilgiri hills

Purpose: Table

Maturity: Medium

Special trait: High resistant to potato cyst nematodes & moderately resistant to late blight



51. Kufri Sangam

Year of release: 2019

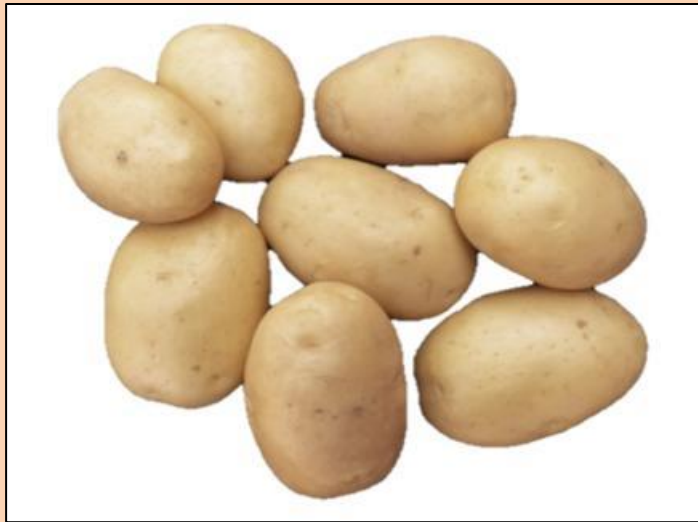
Yield: 35-40 t/ha

Adaptability: Northern and central plains

Purpose: Processing and Table

Maturity: Medium

Special trait: Moderately resistant to late blight and excellent storability



52. Kufri Shailja

Year of release: 2005

Yield: 30-35 t/ha

Adaptability: North Indian plains

Purpose: Table

Maturity: Medium

Special trait: Moderately resistant to late blight



53. Kufri Sheetman

Year of release: 1968

Yield: 20-25 t/ha

Adaptability: North-western plains

Purpose: Table

Maturity: Medium

Special trait: Moderately resistant to late blight and frost tolerant

Kufri Sheetman



54. Kufri Sherpa

Year of release: 1983

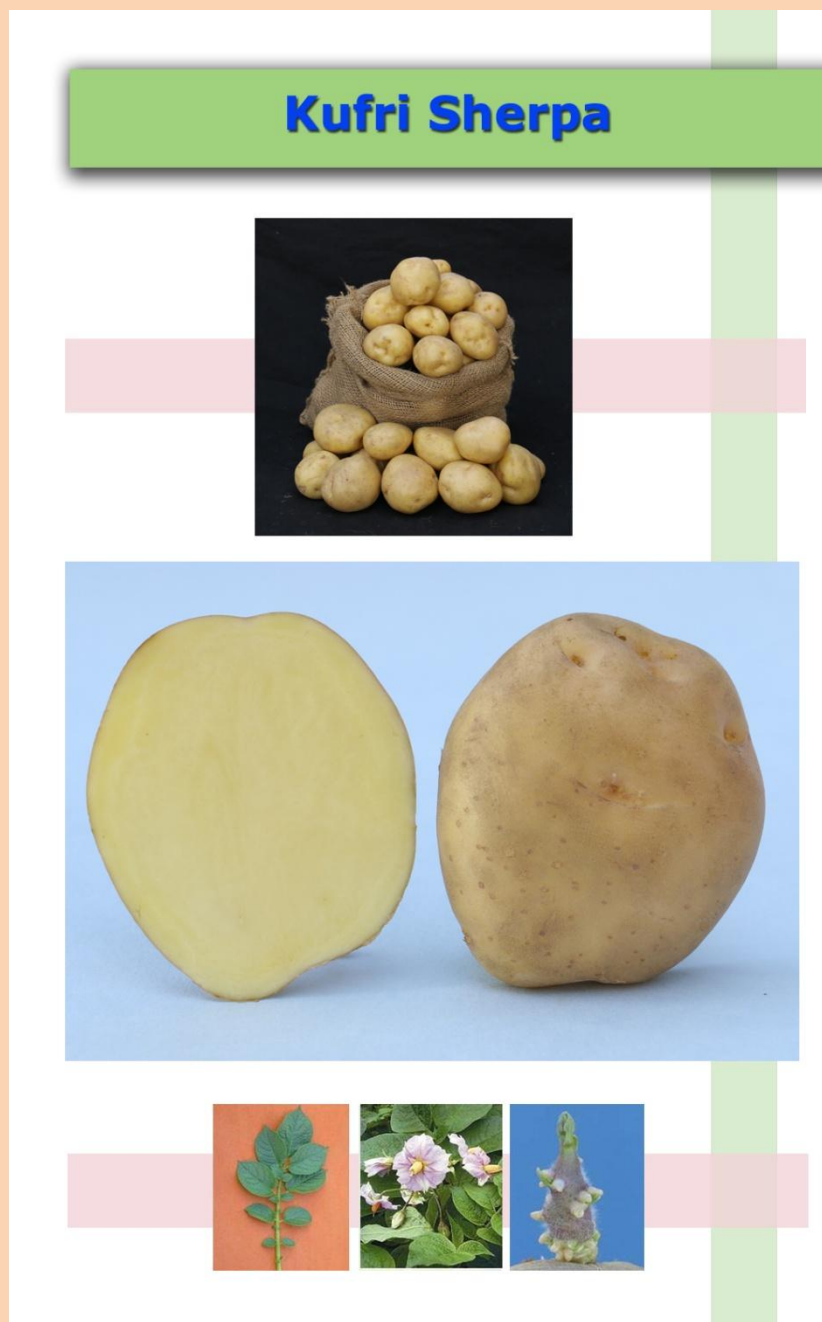
Yield: 15-20 t/ha

Adaptability: North-Bengal hills and Sikkim

Purpose: Table

Maturity: Medium

Special trait: Resistant to late blight



55. Kufri Sindhuri

Year of release: 1967

Yield: 20-25 t/ha

Adaptability: North-Indian plains

Purpose: Table

Maturity: Late

Special trait: Susceptible to late blight and suitable for low input area

Kufri Sindhuri



56. Kufri Surya

Year of release: 2006

Yield: 25-30 t/ha

Adaptability: North Indian plains and plateau

Purpose: Processing

Maturity: Early

Special trait: Susceptible to late blight, tolerant to heat and hopper burn, and suitable for early planting

Kufri Surya



57. Kufri Sutlej

Year of release: 1996

Yield: 30-35 t/ha

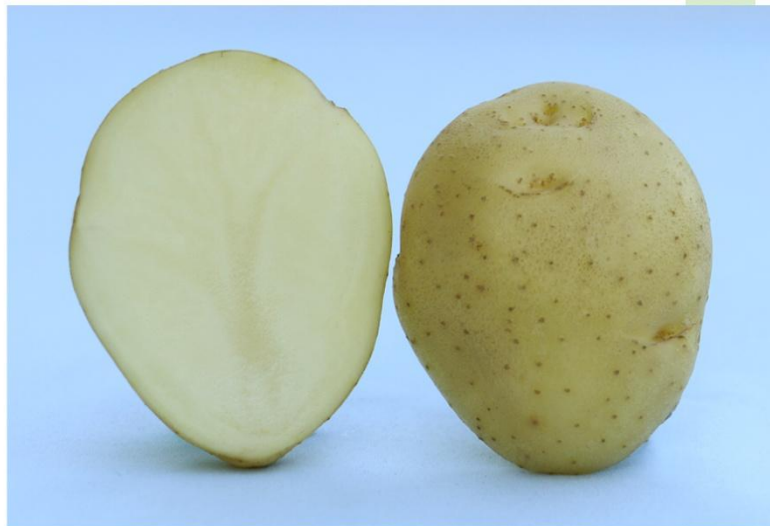
Adaptability: North Indian plains

Purpose: Table

Maturity: Medium

Special trait: Moderately resistant to late blight

Kufri Sutlej



58. Kufri Swarna

Year of release: 1985

Yield: 30-35 t/ha

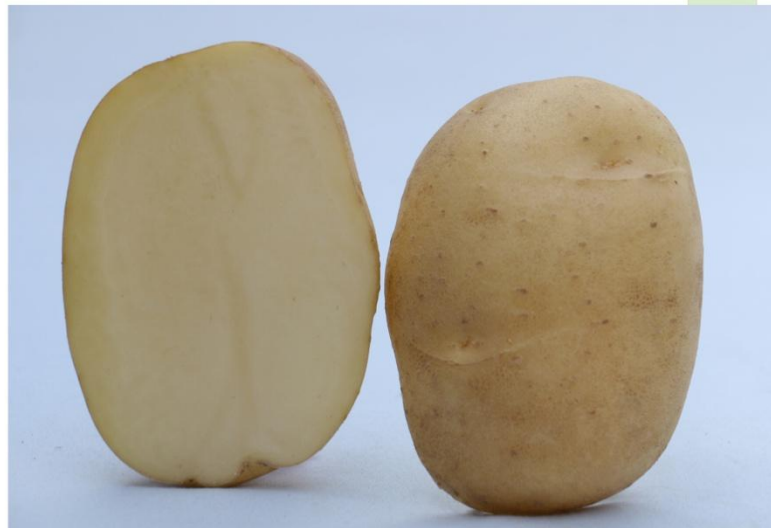
Adaptability: South Indian hills

Purpose: Table

Maturity: Medium

Special trait: Resistant to late blight and PCN

Kufri Swarna



59. Kufri Thar-1

Year of release: 2019

Yield: 30-35 t/ha

Adaptability: East coast plains and middle Indo-Gangetic plains

Purpose: Table

Maturity: Medium

Special trait: Drought tolerant (20% water saving), and suitable for Orissa & UP.



60. Kufri Thar-2

Year of release: 2019

Yield: 35 t/ha

Adaptability: Gangetic plains, trans-Ganga plains, central plateau and hills and western dry regions

Purpose: Table

Maturity: Medium

Special trait: Drought tolerant (20% water saving), and suitable for UP, Rajasthan, Haryana and Chhatisgarh



61. Kufri Thar-3

Year of release: 2019

Yield: 45 t/ha

Adaptability: Trans and upper Gangetic plains and eastern plateau & hills

Purpose: Table

Maturity: Medium

Special trait: Drought tolerant (20% water saving), and suitable for Haryana, UP and Chhatisgarh.

